

Wareside Community Green Space

20's Plenty for  
Wareside

**Larkshill Opening!**



**SAT 29th MAY  
ALL WELCOME  
FROM 2PM**

Post Lockdown Socially Distanced Community Event  
by Wareside Parish Council

**Explore, Birdwatch,  
Meet your Neighbours, Picnic,  
Plant Exchange**

**Please Walk or Cycle**



For further information call 07818 003592/07715 771365

# Waresider



# Summer 2021

20's Plenty for  
Wareside



# The Waresider Summer 2021

EDITORIAL TEAM: Richard Hart Tel: 463919  
Maureen Dunn Tel: 469310  
Doug Cook Tel: 467010  
Mary Hicks Tel: 462843

Contributions for the next issue due by 31st July 2021  
E-mail : richhart40@googlemail.com

Rector The Reverend Mark Dunstan 01920 877276  
The New Rectory, Acorn Street, Hunsdon  
Church Officers  
Churchwarden: Mr Nicholas Buxton 468709  
Treasurer: Mrs Sarah Hart 463919  
Secretary: Ms Ann Emsley 01992 589363

**Wareside Village**  
Wareside Church of England Primary School: 462354  
Village Hall, Bookings Secretary: Mrs Judy King 467223  
Wareside Entertainers: Mrs Judy King 467223  
Parish Council  
Clerk: Ms Rebecca Burdick 465487  
Website [www.waresideparishcouncil.co.uk](http://www.waresideparishcouncil.co.uk)

**Other numbers**  
Hospitals: Hertford County, North Road, Hertford 01438 314333  
Queen Elizabeth II, Howlands, Welwyn Gdn City 01438 314333  
Princess Alexandra, Hamstel Road, Harlow 01279 444455  
The Samaritans, 1 Cross Street, Ware 464099  
Citizens Advice Bureau (please see in side)  
101 - Use to contact local police about non-emergency crimes or concerns  
111 - Use if you need non-emergency medical help

**Wareside Community Website: <https://wareside.org.uk>**

Advertisement rate is £45 per ¼ page advert per year (4 issues).  
Any income from advertising remaining after deducting  
printing costs is donated to the Church.



**For: Pain \* Sleep \* Life's Challenges  
MindBodySpiritWorking together**

**At THE NOOK - Babbs Green, Wareside, Herts  
Or mobile to your home OR ONLINE**

**\*REFLEXOLOGIST\***

**\*REIKI MasterTeacher\***

**\*Life COACH\***

**\*AwardWinning Artist\***

**Annemarie Oshelda-Gill**

**Tel. 07501 353819**

**email: [amogill59@gmail.com](mailto:amogill59@gmail.com)**

**[www.gillandoshelda.com](http://www.gillandoshelda.com)**

**Facebook.com/Amog.Selfcare.Choices**

**Facebook.com/AMOG.GWG & WhatsApp + Messenger**



Car-Truck-Tractor-Dumper  
**KB TYRES LTD.**  
**WARE (01920) 822524**  
Exhausts-Batteries-Tyres-Punctures-Balancing-Tracking  
**Colliers End, Ware, Herts SG11 1EL**

## Here to help!

Whether it's advice on employment rights, benefit entitlements, money worries, housing concerns, relationship challenges, access to local support etc – Citizens Advice is here for you. Whilst our offices are currently closed you can contact us for free and confidential advice in a number of ways:



Call our local Messageline on **01920 459944** (any time) and one of our advisers will call you back. Or call our Herts Adviceline (10am-4pm Mon to Fri) on **0800 144 8848** (you may have to wait in a queue)



Email us at  
[www.citizensadviceeastherts.org.uk/webadvice](http://www.citizensadviceeastherts.org.uk/webadvice)



Webchat with us at  
[www.citizensadvice.org.uk/about-us/contact-us/contact-us/web-chat-service/](http://www.citizensadvice.org.uk/about-us/contact-us/contact-us/web-chat-service/)



Contact us via Facebook Messenger at  
[www.facebook.com/EastHertsCitizensAdvice](https://www.facebook.com/EastHertsCitizensAdvice)

You can also access a range of useful **information and links online** at [citizensadviceeastherts.org.uk](http://citizensadviceeastherts.org.uk)



@EastHertsCitizensAdvice



@EastHertsCAB



@Citizens Advice East Herts

### Dear Friends,

It feels a bit like we're making progress. I've had a proper professional haircut instead of another DIY attempt with my electric beard and hair trimmer. My daughter's wedding, postponed in January, then postponed a second time in March, has now taken place. In church, we have been given permission to sing socially-distanced outside, and it has been a delight to be able to do this in recent weeks. It's still not normal, but it certainly feels like we are taking steps in the right direction.

The pleasant weather helps the positive feeling, of course. The sunshine brings us out of our homes and into more [socially-distanced] contact with one another – a good thing after the drudgery of the “stay at home” instruction and the accompanying enforced isolation. But the weather also affects the garden and what grows therein. All of a sudden, the nettles are a foot high and the cow parsley higher. The grass that had seemed to slumber is now demanding its own haircut, professional or otherwise. Just as other opportunities become possible and other tasks become necessary, everything is growing and the garden owner must dedicate some time each week to containing the expanding green stuff or risk the garden being overwhelmed in no time at all.

I'll be honest ... I struggle with this. The Rectory has a large garden (for which I and my dogs are extremely grateful), but I have a busy life. The bottom line for me and for many others is that it is not easy to keep on top of the brambles and ivy when you're already chasing deadlines for work. But it has to be done. And the deadlines have to be met. So yes, if you have ever passed the Rectory around 7am on a Thursday morning, you might well have seen me loading my brown bin with garden waste. Come rain or shine, daylight or night-time, I've done this more often than I would like to admit.

**Continues over leaf**



Over recent weeks, I've been reading the Bible's book of Proverbs, and considering its challenge to live a life of wisdom rather than folly. The key to the book is in understanding wisdom as "the fear of the Lord". This idea is expressed in various ways but is essentially the proposition that the best way to live as beings created by God in the world God has made is according to God's plans and purposes. This means living humbly, with kindness and gentleness towards others. It means honouring marriage and the sanctity of life, respecting all others as of equal worth and value – each individual precious in God's eyes and gloriously made in his image. It means striving to pay attention to the voice of God (most readily accessible to us in the Bible) rather than the tempting voices of the world. Sometimes it means saying, "No!" to something good in order to achieve something great.

As we emerge from lockdown and the pressures of life build again, let us not rush into "getting back to normal" or to embracing new and wonderful things. Rather let us consider how God would have us live, so that we might truly be a blessing to our family, friends, and neighbours. Like the fast-growing garden, there will be things to which we must attend – and right away. But there will be others that can wait; and still others we should avoid!

May God grant you wisdom for living, that you would know his blessing,

*Mark Dunstan*

The United Benefice of Hunsdon with Widford and Wareside  
 Three [Church of England](#) churches in the [Diocese of St Albans](#)  
 working together to Live God's Love.  
 Rectory, Acorn Street, Hunsdon, Ware. SG12 8PB

Hertfordshire Community Navigation Service (HCNS) which aims to improve health and wellbeing by supporting those vulnerable service users in their own homes and in moving from hospital to home, using Community Navigators and Link Workers and the HCNS Pathway which is built into the overall social prescription pathway.

VCS support, including:

Winter welfare checks and hot meals via Hertfordshire Independent Living Service (HILS), including distributing some of the Warm in Winter Gift Bags from Small Acts of Kindness.

Supporting the BAME community and Rural Support Networks via CDA Herts.

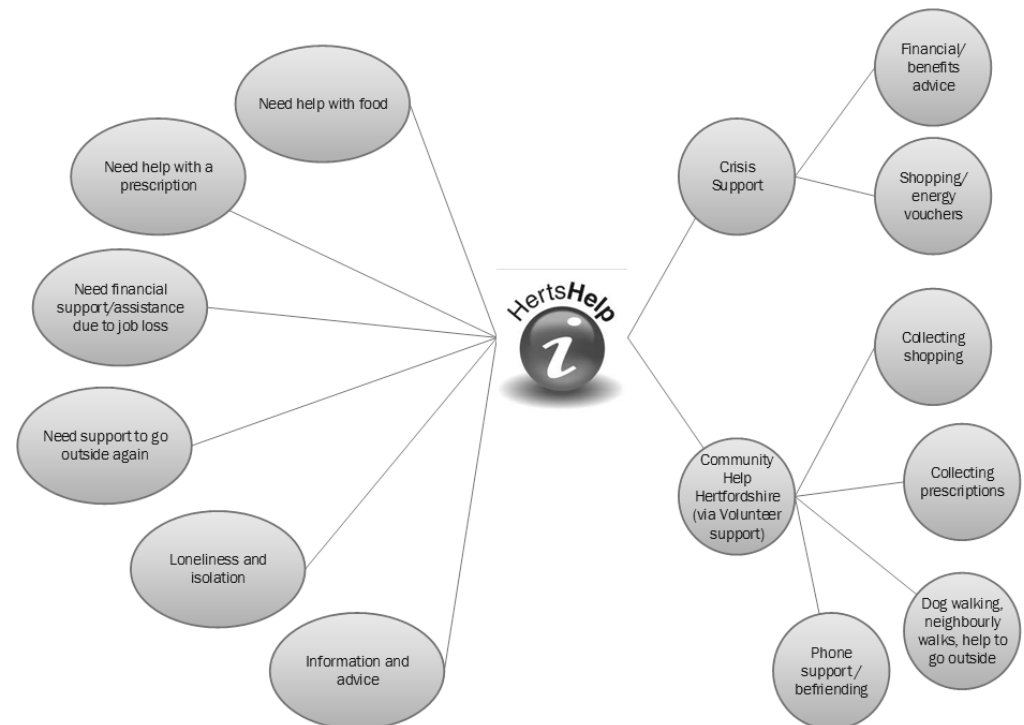
Support to the Gypsy and Traveller community via GATE.

Befriending, support and 'Keeping in Touch' calls via Carers in Herts for unpaid carers, Age UK, Mind in Mid Herts, lunch clubs and day centres.

Countywide 'Reach Out Hertfordshire' hospital to home volunteering service offering companionship and practical support to help reduce loneliness and isolation.

Volunteer support (including shopping, medication collection, befriending, dog walking) via the Community Help Hertfordshire (CHH) service model under which all the Hertfordshire CVS organisations and Volunteer Centres have come together to provide a unified response to support people in need. This network also acts as a support and co-ordinator for smaller but important community groups including mutual aid groups, foodbanks and good neighbour schemes, assisting with organisational development and fund raising.

**To view opening hours and to access all of these services call HertsHelp on 0300 123 4044, visit <https://www.hertshelp.net/winter-health.aspx> , [www.hertshelp.net](http://www.hertshelp.net) or email [info@hertshelp.net](mailto:info@hertshelp.net)**





# CommunityHelp Hertfordshire

A partnership of voluntary sector infrastructure  
organisations funded by Hertfordshire's public sector

## HertsHelp – we're here for you!

## For Herts residents, carers & families general:

Need help and don't know where to turn? Have a question or problem? If you or someone you know are struggling this wintertime or any time, we're here to offer help and support.

This is available to you through HertsHelp - our countywide information, advice, signposting and support service - from 8am-8pm Monday-Friday (10am-6pm weekends/bank hols).

**Just call HertsHelp on 0300 123 4044, visit <https://www.hertshelp.net/winter-health.aspx>, [www.hertshelp.net](http://www.hertshelp.net) or email [info@hertshelp.net](mailto:info@hertshelp.net)**

## For Partners/Districts etc.

As we move into the winter period, and at any time, support continues to be available for vulnerable residents, carers and families in Hertfordshire accessed through HertsHelp (HH) who will triage clients' needs taking and making appropriate referrals or signposting to relevant support services.

## Our offer includes:

### A broadened Crisis Intervention Service

HertsHelp will deliver a crisis intervention service for people and families in crisis to include food, energy costs and other essentials for those who are in ongoing crisis or who have come into crisis as a result of COVID 19.

Including linking to relevant District/Borough, as well as support to access relevant Government Schemes:

DWP Winter Fuel Payment: <https://www.gov.uk/winter-fuel-payment/>

Cold Weather Payment: <https://www.gov.uk/cold-weather-payment>

Warm Home Discount: <https://www.gov.uk/the-warm-home-discount-scheme>

Referrals and support via Districts/Boroughs for Herts Warmer Homes or YES Energy Solutions for example.

Including all Citizens Advice in the Districts and Boroughs who offer mid to long term crisis intervention support, providing advice, information and support on debt, benefits, employment enquiries, legal issues relating to financial matters, housing enquiries, consumer issues, family and relationship issues as well as fuel affordability, supply, billing, meter issues, scams and general support plus Energy Schemes via website: <https://www.citizensadvice.org.uk/consumer/energy/energy-supply/>

There is also the HERT (Hertfordshire Economic Recovery Team) partnership where HCC's Money Advice Unit (MAU) and Citizens Advice Hertfordshire (CAH) have come together to enhance the finance, welfare benefits and debt management advice already available in Hertfordshire to vulnerable residents who have been most affected by the COVID-19 crisis, to aid their financial recovery and embed future financial security and literacy, complementing the work done by financial inclusion workers in District and Borough Housing teams, especially regarding complex cases.



## Wareside Childminding

Learn. Share. Laugh. Grow.

# Ofsted Registered Childminder

Monday to Friday from 7:30am to 6pm.

- From Term time to full time contracts available.

- Safe and caring home from home child care.

Email [waresidechildminding@gmail.com](mailto:waresidechildminding@gmail.com)

**Calling all Waresiders We would love having more contributions from people in & around the village, including editorial pieces, local news, matters of interest, events or suggestions as to how we might improve the parish magazine. Have you any new, interesting or historic pictures of Wareside you would like featured, or you think could a make a front cover for The Waresider**

**If you would like to have your say, contact:**

**[richhart40@googlemail.com](mailto:richhart40@googlemail.com)**

***Villagers wanting to sell items privately can advertise in the Waresider for FREE!***



**For Sale** Very old clay pots, about 5" diameter, once used to grow cucumber seedlings: £5 each or 5 for £20.

Also, a few very old wooden boxes, once used to transport 12lbs of tomatoes to London markets. The boxes were lined with two sheets of tissue paper in a combination of pink, white or blue, to indicate the size and quality of the produce inside. £10 each depending on degree of decrepitude...

All proceeds to Wareside Village Hall. Telephone: 462843



# Church Services

## Worship in the Summer

### What Jesus Did and Said...

We are pleased to be able to hold our services in the church building and even to sing together outside. If you have no coronavirus symptoms and have not recently tested positive for the virus, you are most welcome to worship with us. At time of writing, guidance is that you just need to bring a mask and arrive early enough to get comfortable for a prompt start. This may change over the coming months... please watch our website and social media channels for updates and general news ([www.waresidechurch.org](http://www.waresidechurch.org)).

We recognise that not everyone will feel able to join us in person, so we are continuing to publish worship materials online and on the phone. If you have no internet access, our dial-a-sermon phonenumber is available 24 hours a day (01279 967111) and if you have, there are links to our online services from our website.

Our services in the church building will be at 9:30am on 13<sup>th</sup> and 27<sup>th</sup> June, and 11<sup>th</sup> July.

This continues our usual pattern and, as normal, Waresiders are encouraged to join with the congregation at Widford Church at 9:30am on the 1<sup>st</sup> and 3<sup>rd</sup> Sundays of each month, even as Widford's congregation is encouraged to join worship in Wareside on the 2<sup>nd</sup> and 4<sup>th</sup> Sundays.

## Wareside Defibrillator

Once COVID meeting restrictions are lifted, a training session on CPR and the defibrillator will be organised by the parish council. Please let Councillor Mike Ryan [mepryan@btinternet.com](mailto:mepryan@btinternet.com) know if you would like to attend training.

The new defibrillator is located at the entrance to the village hall and is active. It is being checked regularly by parish councillors.

- To access the unit in an emergency call 999. An emergency operator will provide you with the key code to unlock the defib.
- Despite concerns about mobile phone coverage in the village, dialling 999 will get you through to an emergency operator even if your mobile phone is displaying no reception bars.
- The emergency operator will know which defib is being used and will be in touch with the ambulance service.
- Make sure to tell the emergency operator where you are taking the defib to.
- Once activated, the unit will talk the user through steps to perform CPR and if necessary deliver a shock.
- When the ambulance service arrive they will probably take the defib away with them if it has been used. This is normal practice as they need to download the data regarding number of shocks delivered, time between shocks etc. The unit will be returned once this is done.

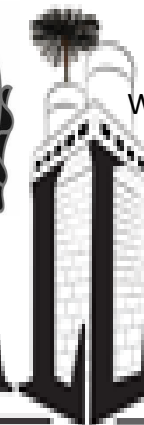


### Edgar Landscapes

The specialists in garden design, construction and maintenance

With over 25 years experience we offer a complete garden service, tailored to your needs and budget  
Please call Mark for advice or a free quotation  
office: 01920 460957 mobile: 07774 612183  
email: [mark.edgar8@btinternet.com](mailto:mark.edgar8@btinternet.com)  
Hall House, Bakers End, Wareside, Herts SG127SH

[kevin@tlt-chimney-sweeping.co.uk](mailto:kevin@tlt-chimney-sweeping.co.uk)  
5 Mill Race,  
Stanstead Abbots  
Ware, Hertfordshire  
SG12 8BZ  
Tel: 07904 025301



# TALLANT

## CHIMNEY SWEEPING


# AUSTIN'S

FAMILY FUNERAL DIRECTORS

## THE COMPLETE FUNERAL SERVICE

**AUSTIN'S**  
FAMILY FUNERAL DIRECTORS  
SERVING THE COMMUNITY SINCE 1700


24 HOUR SERVICE  
PRIVATE CHAPELS



12 MILLBRIDGE HERTFORD  
32 HIGH STREET WARE  
01992 582052 01920 468551

**HARWOOD PARK**  
CREMATORIUM & MEMORIAL GARDENS

...remember what  
peace there may  
be in silence




MEMORIAL BROCHURE AVAILABLE

HARWOOD PARK  
WATTON ROAD • STEVENAGE  
01438 815555

**AUSTIN'S**  
MEMORIALS  
MONUMENTAL STONEMASONS

MARBLE,  
STONE &  
GRANITE  
MEMORIALS



CHOOSE  
FROM OVER  
100 MEMORIAL  
DESIGNS

RENOVATIONS  
& CLEANING

ADDITIONAL  
INSCRIPTIONS

CHURCH STREET • WELWYN  
01438 840876

**THE HERTFORDSHIRE  
FUNERAL PLAN**

PRE-PAYMENT FUNERAL  
PLANS CUSTOMISED TO  
YOUR REQUIREMENTS



12 MILLBRIDGE HERTFORD  
32 HIGH STREET WARE  
01992 582052 01920 468551

SERVING THE LOCAL COMMUNITY FOR TEN GENERATIONS  
[www.austins.co.uk](http://www.austins.co.uk) [www.crematorium.co.uk](http://www.crematorium.co.uk)

Through the school summer holidays, all three congregations will gather for combined services at **10:30am** as follows:

25<sup>th</sup> July and 15<sup>th</sup> August at Wareside,  
1<sup>st</sup> and 22<sup>nd</sup> August at Widford, and  
8<sup>th</sup> and 29<sup>th</sup> August at Hunsdon.

20's Plenty for  
Wareside



In addition to these services, our midweek meetings for prayer and Bible study will continue, initially online via Zoom, but then in person as restrictions are lifted.

Lastly, don't forget I and others pray regularly for village residents and their loved ones. There is a virtual prayer box on our website for specific requests, or you can always call or email me.

Revd Mark Dunstan, 01920 877276



  
**INSTRUMENTAL  
LESSONS**

*Plano, Singing and Flute  
Lessons*

With Hannah

30 mins = £12.50  
1 hour = £25.00

Contact Hannah on 07532117871  
[hannahtakats@hotmail.co.uk](mailto:hannahtakats@hotmail.co.uk)  
Helham Green, Wareside

### Looking for a maths or science tutor?

I am a local student who has just finished my A-Levels and am available to give online tutoring in science and maths. Lessons are delivered in a friendly, flexible and approachable way, tutoring primary age up to GCSE level. Qualifications: A\* in all science/maths subjects at GCSE, and predicted A\*A\*A in my A-Levels. References available on request. Please email

[maxxrobinsonn@gmail.com](mailto:maxxrobinsonn@gmail.com)





If you or someone close to you is dying, you can talk to us

We know that facing the end of life can leave you feeling isolated and alone. The Anne Robson Trust helpline volunteers are here to listen and support you.

Call us on 0808 801 0688

We're here for you, if you or a loved one are facing the end of life at home, in a hospital, care home or hospice.

To find out more, please visit [www.annerobsontrust.org.uk](http://www.annerobsontrust.org.uk)



# HERTFORDSHIRE CONSTABULARY



PC Rob Wenham



PC Jack Culverhouse



PCSO Leon De Bruyn

## LOCAL POLICING - ECHO

“Echo is the Herts police communication platform for local communities to use to let us know what area’s think the police should be focusing on. The feedback received by each community is automatically assessed and reviewed and discussed at the Local Policing Priorities meeting which takes place each quarter.

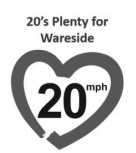
This information contributes to new policing priorities being set for the next quarter.

The Local Policing Priorities for the current quarter were set on 24th March 2021. They are:

- To reduce Agricultural plant theft
- Speeding

Local SNT officers have conducted several speed checks over the past months and will continue to do so from Information received from police reports and Echo.”

Herts Constabulary ECHO.png



Emergency call: 999 Non- Emergency call: 101  
Online Report to Herts Police

Report crime: <https://www.herts.police.uk/report>  
Echo feedback platform: [bit.ly/police-eherts](https://bit.ly/police-eherts)

Antsey, Meesden, Hormead, Hare Street, Albury, Brent Pelham, Stocking Pelham, Furneux Pelham, Little Hadham, Much Hadham, Widford, Hunsdon, Wareside, Eastwick & Gilston



As summer arrives, we hope that readers will continue to enjoy the walks listed on the website [www.hundredparishes.org.uk](http://www.hundredparishes.org.uk). These varied routes provide a wonderful opportunity to appreciate the variety of wildflowers growing in field margins, hedgerows, verges, churchyards and village greens.

After this season's chilly start, the warmer days have encouraged an abundance of flowers to provide essential nectar and pollen to support visiting pollinators. With the increasing concern about the alarming reduction in insect numbers, many of those caring for green spaces have adopted the 'NO MOW IN MAY' approach to grass maintenance, where the uncut grassy places can support a surprisingly large number of different native species. Their flowers add variety to these areas and the bees benefit as well!

Wayside plants such as Stinging Nettles, Goosegrass (the long, hairy plant that sticks to your socks) and Cow Parsley thrive alongside lanes and tracks. Cow parsley, with its splay of tiny white flowers, can grow as high as a person. A touch of pink is often added by the flowers of Red Campion, also known as Bachelor's Buttons as it might have been worn as a buttonhole by unmarried men.

Common bright yellow flowers include Dandelions and the shiny golden petals of a great variety of Buttercups. The tall Ox-eye Daisy is often present where wildflower mixtures have been sown. In recent years these have become a common sight beside new roadways.

The types of wild flower I have listed can be seen and enjoyed almost everywhere in the Hundred Parishes. There are many more varieties to be seen and occasionally something quite rare. For smart phone users there are apps to help with identification, but we do not have to be experts to appreciate and enjoy nature's abundance.

Tricia Moxey, Trustee

## **POWELL FUNERAL SERVICE**

**Watton Road Ware**

**01920 463260**

**79 Burford Street Hoddesdon**

**01992 470153**

**83 Railway Street Hertford**

**01992 509611**

**Ace**  
**Pest Control**  
Prompt & Professional  
Control of  
**\* WASPS & BEES \***  
**ANTS, FLIES, FLEAS - ALL INSECTS**  
**RATS, MICE, MOLES**  
**RABBITS, SQUIRRELS, ETC.**

ROYAL SOCIETY OF HEALTH MEMBER **npta** NATIONAL PEST TECHNICIANS ASSOCIATION

**01920 465092**  
Easneye Cottage, Holly Cross Rd., Ware

Welcome To Wareside  
*Tess & Liz At Bourne Cottage*  
*Jacky & Terry At Ash Cottages*



Our 25th anniversary of running the Chequers came & went last July without fanfare, a forgotten mile stone in the annals of Wareside history (at least for us) As we start returning to normal pub hours, we'd like to thank all who've supported the Chequers over the years, a special thank you goes for the support & custom over last 14 months in our guise as an Offy, Takeaway, Shop & So briefly a pub.

**The Parish Registers**  
Funeral and Burial

LEE, Trevor Robert	70 years	4 <sup>th</sup> March
ELLIS, Catherine Anna	53 years	22 <sup>nd</sup> April

Pickup or Home delivery  
**Beer in Box**

3l approx. 5pts £13.50  
5l approx. 9pts £22.50  
10l approx. 18pts £36  
20l approx. 36pts £60

**500ml bottles**  
Six £16 Twelve £30  
In mixes case or single style

**HADHAM**  
BREWERY  
Est. 2015

Search online, call 01279 771916 or Email [info@hadhambrewery.co.uk](mailto:info@hadhambrewery.co.uk)

Registered Charity  
No. 302487



### Wareside Village Hall Booking Charges

CATEGORY	TIME	FEE
CHILDREN'S PARTIES (under 12 years of age) Up to 3 hours, plus ½ hour before and after allowed free for setting up. Any extra time at hourly rate. Includes use of kitchen.	9.00am – 5.00pm	£25
Any Other Use	£10/hour	

For more information call Mrs Judy King 01920 467223



## Vehicle Repair Recovery

Part of the 24hr Emergency Life Group



**All repair work undertaken**



**24hr Roadside Recovery**



**Aircon Servicing**



**Body shop**



**And more**



**TEL: 01920 330610**

## Wareside C of E Primary School's Nursery

Our Nursery is open each school day from 8.45am until 3.00pm. We offer a high quality, nurturing environment including 30 hours of nursery provision for 3 and 4 year olds.



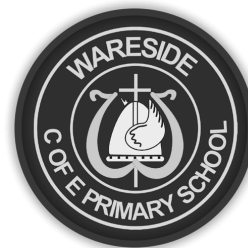
### Childcare Costs

**All 3 to 4 year olds can receive 15 hours of free early education/childcare every morning.**

**An additional free 15 hours for the afternoon sessions, totalling 30 hours per week, is available for eligible families.**

**Please find out more here: [www.gov.uk/30-hours-free-childcare](http://www.gov.uk/30-hours-free-childcare)**

**If your family is not eligible, the afternoon sessions cost £12.00 a day.**



Please visit our website and view a new video introduction of our school.

Part of a GOOD school(Ofsted 2017)

Idyllic village just 5 minutes from Ware  
"Nursery and Reception children in the early years settle into their routines quickly and thoroughly enjoy their indoor and outdoor learning activities" (Ofsted 2017)

## PAWS IN GOOD HANDS

**Dog Walking** +home visits for smaller pets  
**Cat Sitting**

And all fully insured  
Dog walking 45mins-£10 1hour-£12

Cat & Puppy sitting £10 per visit

Need your pet taking to the Vet or groomer

**Tel-Jodie 01920 463 723 / 07951 945 088**

**Email [jodiejacob1@btinternet.com](mailto:jodiejacob1@btinternet.com)**

From an ex-RSPCA Veterinary Nurse 20+ years experience & references available on request  
your best friend couldn't be in better hands





Wareside C of E Primary School is now fully open and all the children have now returned. Horray! We have a busy summer term planned including a school trip to Woodhall Estate for the Amazons Class to support the children's learning about the countryside, ecology and farming in Britain. We have also arranged for all the children to improve their cycling skills with Balanceability, a Hertfordshire County Council department and we have already had road safety sessions presented in school. The whole school will be visiting St. Thomas of Canterbury School to take part in a Forest School Enrichment Day in July. SWALLOWS CLASS (Reception – Year 2)

We have been very busy learning all about dinosaurs. The children have been observing some eggs that we discovered in the outside area, which have now hatched!

We are not sure which type of dinosaur they belong to, so we have been using our imagination to write down our ideas. Mrs Simmons had a visit after school from an unusually friendly T-Rex! It was colossal and extremely noisy but actually just wanted a cuddle! KS1 have been researching and finding lots of facts, ready to write non-chronological reports about a Triceratops. They have showed perseverance to create detailed sketches and used water colours to make their dinosaur sketches come to life.



Reception have explored what dinosaur skin may have looked like by discussing textures and printing with different materials.

AMAZONS CLASS (Years 3 – 6) This half term we are learning about mountains and so this week we looked at how they are represented on maps using contour lines. In order to understand how this worked the children deconstructed their own potato 'mountain' drawing round the sliced potato to create the contours. They also reconstructed a 'mountain' by cutting out contour lines, gluing them to cardboard and re assembling them so they became 3D.

P.E. and R.E. EVENTS hanks to Chance to Shine Cricket, we have now started our FREE half term of cricket sessions which the children are really enjoying. Our instructor Mat has been teaching the children some new skills I'm throwing, catching, striking and fielding. We have also started our after-school clubs (Basketball -Mondays, Athletics- Wednesdays and Boxing – Thursdays) led by Junior Sharks Rugby who make the sessions really enjoyable.



Ann Gaze Interim Headteacher

## In Memory of Penny Coggan

Penny and Richard Coggan lived in Wareside for many years and were highly respected and friends with many of the local residents. You always thought of Penny and Richard together as they were a close knit family with 3 sons. They then decided to be adventurous and moved to France for a more relaxed life-style. However, just over a year ago they returned to live in a small village near Harwich to be with 2 of their sons and their grand-daughter. Sadly on the 24th April, Penny was tragically knocked down by a speeding motorist outside their house and although the family rushed to be with her there was nothing they could do.

Our many happy memories of Penny will never fade and our thoughts and sympathy are with Richard and his family.



**Schoolreaders**  
improving literacy • increasing life chances

**VOLUNTEERS NEEDED TO LISTEN TO CHILDREN READ IN LOCAL PRIMARY SCHOOLS** [www.schoolreaders.org](http://www.schoolreaders.org)

Can you spare an hour or two a week to listen to children read in a local primary school? **Schoolreaders** is looking for more volunteers in Hertfordshire to carry out this important role.

No qualifications are necessary, just a good command of spoken and written English. **Schoolreaders** is flexible and will match your availability to an appropriate, local school. **Please visit the website or call 01234 924111**



# WARESIDE ALLOTMENT ASSOCIATION

*The coldest, driest April, followed by the coldest May Day bank holiday has seen work on the allotments progressing only at a snails pace. Recent strong winds have resulted in some cloches and netting being blown down. One plotholder even had her shed blown over. Hopefully no permanent damage has been done. Many of the plants I started from seed are now cluttering up the windowsills as it has been too cold to get them in the ground.*

*Although the pundits reckon the growing season has been set back by three to four weeks it's not all doom and gloom. One crop I did get in before the April cold was the onions (Stuttgart Giant). They don't seem to mind the cold and dry and are showing green shoots. I'm only growing "whites" this year as I have had limited success with reds (Red Baron), they don't grow large enough. So far I have been successful in keeping the pigeons from pulling the young plants out. by growing them through some old wire shelving pegged over them.*

*I took a slight gamble that we had seen the last hard frost for the year and planted out some courgettes a few days after the bank holiday. So far so good, but I kept a few back just in case.*

*The rhubarb has survived and is looking good - won't be long until rhubarb crumble is back on the menu.*

*Despite the cold, dry, windy weather the blossom on the fruit trees looked good, hopefully the pollinators are out of hibernation and doing their work.*

*I will be potting on and planting out sweet peas, cauliflowers, and red cabbage this week, weather permitting. If you are passing the allotments give a wave.*

20's Plenty for Wareside



**Stay safe  
Mike**

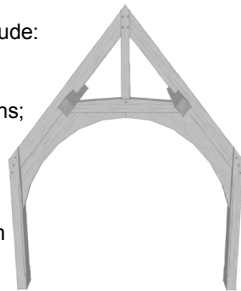
## ARCH Building Consultancy Ltd.

Historic Building Consultancy Chartered Building Surveyors

Specialising in Listed and historic buildings.

Professional services include:

- Architectural design for alterations and extensions;
- Advice on repairs and conservation;
- Project consultation from inception to completion.



**RICS**

www.archbuildingconsultancy.co.uk  
info@archbuildingconsultancy.co.uk

Regulated By RICS

01920 486050

ALTERATIONS REPAIRS CONSERVATION HISTORIC BUILDINGS

Saving you precious time



# A+ Bookkeeping

For all your bookkeeping needs

Qualified with over 15 years experience

VAT,SAGE,CIS,  
General  
Bookkeeping  
And more

Mobil-07388 158943

Email -

aplus\_bookkeeping@outlook.com

# CARER AVAILABLE

**Are you caring for a relative at home?**

**Do you sometimes need a short break,**

**perhaps to go shopping or**

**out with a friend for a coffee?**

I am a carer with 25 years experience,

NVQ qualified and DBS checked.

I live in Wareside and can offer short breaks of up to 3hours.

If I can help please call or email me to discuss.

email Davidgoodman068@gmail.com

or call David Goodman 07531 305712