

AUSTIN'S

FAMILY FUNERAL DIRECTORS

THE COMPLETE FUNERAL SERVICE

AUSTIN'S

FAMILY FUNERAL DIRECTORS

SERVING THE COMMUNITY SINCE 1700

24 HOUR SERVICE
PRIVATE CHAPELS



12 MILLBRIDGE
HERTFORD
01992 582052

32 HIGH STREET
WARE
01920 468551

HARWOOD PARK

CREMATORIUM & MEMORIAL GARDENS

...remember what
peace there may
be in silence



MEMORIAL BROCHURE AVAILABLE

HARWOOD PARK
WATTON ROAD • STEVENAGE
01438 815555

AUSTIN'S MEMORIALS

MONUMENTAL STONEMASONS

MARBLE,
STONE &
GRANITE
MEMORIALS



CHOOSE
FROM OVER
100 MEMORIAL
DESIGNS

RENOVATIONS
& CLEANING

ADDITIONAL
INSCRIPTIONS

CHURCH STREET • WELWYN
01438 840876

THE HERTFORDSHIRE FUNERAL PLAN

PRE-PAYMENT FUNERAL
PLANS CUSTOMISED TO
YOUR REQUIREMENTS



12 MILLBRIDGE
HERTFORD
01992 582052

32 HIGH STREET
WARE
01920 468551

SERVING THE LOCAL COMMUNITY FOR TEN GENERATIONS
www.austins.co.uk www.crematorium.co.uk

WARESIDER



SPRING 2021



The Waresider Spring 2021

EDITORIAL TEAM: Richard Hart Tel: 463919
Maureen Dunn Tel: 469310
Doug Cook Tel: 467010
Mary Hicks Tel: 462843

Contributions for the next issue due by 30th April 2021
E-mail : richhart40@googlemail.com

Rector The Reverend Mark Dunstan 01920 877276

The New Rectory, Acorn Street, Hunsdon

Church Officers

Churchwarden: Mr Nicholas Buxton 468709

Treasurer: Mrs Sarah Hart 463919

Secretary: Ms Ann Emsley 01992 589363

Wareside Village

Wareside Church of England Primary School: Ann Gaze Interim Headteacher 462354

Village Hall, Bookings Secretary: Mrs Judy King 467223

Wareside Entertainers: Mrs Judy King 467223

Parish Council Clerk: Ms Rebecca Burdick 465487

Website www.waresideparishcouncil.co.uk

Other numbers

Hospitals: Hertford County, North Road, Hertford 01438 314333

Queen Elizabeth II, Howlands, Welwyn Gdn City 01438 314333

Princess Alexandra, Hamstel Road, Harlow 01279 444455

The Samaritans, 1 Cross Street, Ware 464099

Citizens Advice Bureau (please see in side)

101 - Use to contact local police about non-emergency crimes or concerns

111 - Use if you need non-emergency medical help

Wareside Community Website: <https://wareside.org.uk>

Advertisement rate is £45 per ¼ page advert per year (4 issues).

Any income from advertising remaining after deducting
printing costs is donated to the Church.

For: Pain * Sleep * Life's Challenges
MindBodySpiritWorking together
At THE NOOK - Babbs Green, Wareside, Herts
Or mobile to your home OR ONLINE

REFLEXOLOGIST

REIKI MasterTeacher

Life COACH

AwardWinning Artist

Annemarie Oshelda-Gill

Tel. 07501 353819

email: amogill59@gmail.com

www.gillandoshelda.com

Facebook.com/Amog.Selfcare.Choices

Facebook.com/AMOG.GWG & WhatsApp + Messenger

A background image showing several stacks of black tires with a tread pattern.

Car-Truck-Tractor-Dumper
KB TYRES LTD.
WARE (01920) 822524
Exhausts-Batteries-Tyres-Punctures-Balancing-Tracking
Colliers End, Ware, Herts SG11 1EL



www.ehcas.org.uk

Hertford Office

East Herts Council Office
Wallfields, Pegs Lane, Hertford,
SG13 8EQ

Ware Outreach Office

20 Tudor Square, nr. Prezzo)
West Street, Ware, SG12 9XF

Online advice : www.citizensadvice.org.uk

Telephone advice : 03444 111 444

Coronavirus has made life hard for many people.
Citizens Advice East Herts is here to help.

We give **free, up-to-date advice** to everyone in the local community.

If you need help with benefits, work, debt and money, housing, law and courts or more, **please get in touch.**



East Herts

Call us
0800 144 88 48
01920 459944

Email us via
citizensadviceeastherts.org.uk/webadvice

Visit our website
citizensadviceeastherts.org.uk

We have advisers ready to take your call and provide you with free, confidential, impartial and independent advice on any issue.

Local message line (anytime): 01920 459944

(our response time is normally within 24 hours, however please note our advisers are not available Fri – Sun)

Adviceline: 0800 144 8848 (Mon to Fri 9am to 4pm)

For Universal Credit assistance call our Help to Claim service: 0800 144 8 444 (Mon to Fri, 9am to 5pm)

For more information on our services and how we're helping our local community please visit <https://citizensadviceeastherts.org.uk/>

[Rector's Letter](#)

[Dear Friends,](#) By the time you read this, we will be well into the season of Lent, so called because of the lengthening of the day as a result of the position of the earth in its orbit around the sun. Just like this repeating planetary cycle, the seasons come and go year after year – not just the four seasons of spring, summer, autumn and winter, but the seasons of the church year, too. And just like the sun is at the centre of the earth's revolution, so the church's year is centred around the Son. Jesus, the son of Mary and adopted son of Joseph was born in Bethlehem, grew to adulthood in Nazareth, then lived a short nomadic life as a Rabbi before being executed just outside the city walls of Jerusalem. And every year, we retell his story.

I say “we” retell his story. That word “we” is such a little word, but it can mean any number of people from two upwards. My use of it here includes the church – everything we do in church is about Jesus – but it is wider than this, too. Our nation and its culture may be becoming more secular, but our calendar bears the stamp of Christian influence that is not going to go away any time soon. Periodically the newspapers tell us stories of suggestions that Christmas should be renamed “Winterval” or something else supposedly “neutral”, but suggestions like this always seem to cause widespread offence rather than prevent it. Similarly, in recent years, both the National Trust and Cadbury's have been caught up in a public relations crisis connected with dropping the word “Easter” from their eggs and egg hunts. (In both cases, I suspect the outrage is evidence not of a valiant quest to defend truth or a prized aspect of national identity, but merely an attempt to sell papers

The unavoidable fact is that some of the key routines of our national life have been built around these major Christian festivals and unpicking them will take more than councils and corporations trying to engineer a rebrand. !)

Continues over leaf

Let's face it, we even talk about taking holy days (holidays), which were all initially established as celebrations of either the great events of Jesus' life itself or the stories of other heroes of the faith who modelled their lives on him. With every mention of Christmas and every reference to Easter, each of us in some little way points to Jesus. Every person giving something up for Lent is embracing a tradition which was conceived as an attempt to imitate Jesus (who fasted for 40 days in the wilderness). Pancake Day has its origins in Christian devotion and Jesus' teaching that we all need to repent and believe the good news of the Kingdom of God. Even Halloween owes its name to the day it precedes (All Hallows Day / All Saints Day) which at one level is a joyous celebration of the hope we all have in God who takes imperfect people like us and transforms us by his Word and Spirit so we are fit for heaven.

So this Lent and Easter, and through this year in general, I'd like to set you a challenge... instead of unthinkingly using the words (Lent, Easter, Whitsun etc.), pause to reflect on the events to which they point. Rejoice that in Jesus, God became one of us at Christmas, gave his life out of love for us on Good Friday and rose again on Easter Sunday to prove that death is not the end – that there is hope of new life for us all if we come to him in faith.

As we look forward to Easter, may you truly know the hope of the resurrection,

Mark Dunstan

The United Benefice of Hunsdon with Widford and Wareside
 Three [Church of England](#) churches in the [Diocese of St Albans](#)
 working together to Live God's Love.

Rectory, Acorn Street, Hunsdon, Ware. SG12 8PB

Hertfordshire Community Navigation Service (HCNS) which aims to improve health and wellbeing by supporting those vulnerable service users in their own homes and in moving from hospital to home, using Community Navigators and Link Workers and the HCNS Pathway which is built into the overall social prescription pathway.

VCS support, including:

Winter welfare checks and hot meals via Hertfordshire Independent Living Service (HILS), including distributing some of the Warm in Winter Gift Bags from Small Acts of Kindness.

Supporting the BAME community and Rural Support Networks via CDA Herts.

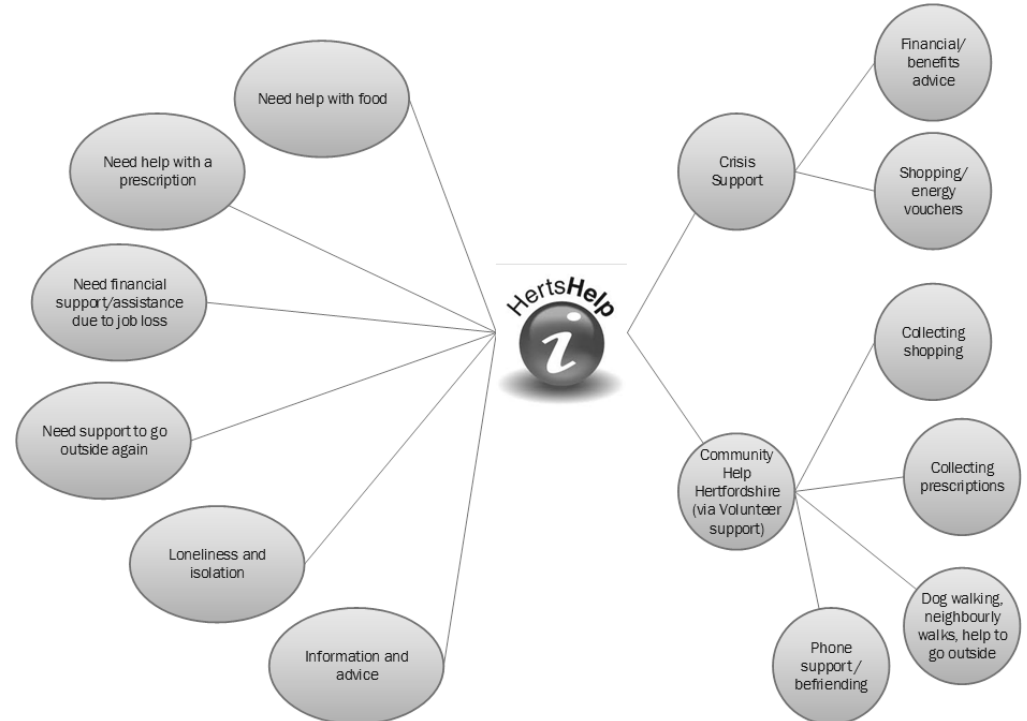
Support to the Gypsy and Traveller community via GATE.

Befriending, support and 'Keeping in Touch' calls via Carers in Herts for unpaid carers, Age UK, Mind in Mid Herts, lunch clubs and day centres.

Countywide 'Reach Out Hertfordshire' hospital to home volunteering service offering companionship and practical support to help reduce loneliness and isolation.

Volunteer support (including shopping, medication collection, befriending, dog walking) via the Community Help Hertfordshire (CHH) service model under which all the Hertfordshire CVS organisations and Volunteer Centres have come together to provide a unified response to support people in need. This network also acts as a support and co-ordinator for smaller but important community groups including mutual aid groups, foodbanks and good neighbour schemes, assisting with organisational development and fund raising.

To view opening hours and to access all of these services call HertsHelp on 0300 123 4044, visit <https://www.hertshelp.net/winter-health.aspx> , www.hertshelp.net or email info@hertshelp.net





CommunityHelp Hertfordshire

A partnership of voluntary sector infrastructure organisations funded by Hertfordshire's public sector

HertsHelp – we're here for you!

For Herts residents, carers & families general:

Need help and don't know where to turn? Have a question or problem? If you or someone you know are struggling this wintertime or any time, we're here to offer help and support.

This is available to you through HertsHelp - our countywide information, advice, signposting and support service - from 8am-8pm Monday-Friday (10am-6pm weekends/bank hols).

Just call HertsHelp on 0300 123 4044, visit <https://www.hertshelp.net/winter-health.aspx>, www.hertshelp.net or email info@hertshelp.net

For Partners/Districts etc.

As we move into the winter period, and at any time, support continues to be available for vulnerable residents, carers and families in Hertfordshire accessed through HertsHelp (HH) who will triage clients' needs taking and making appropriate referrals or signposting to relevant support services.

Our offer includes:

A broadened Crisis Intervention Service

HertsHelp will deliver a crisis intervention service for people and families in crisis to include food, energy costs and other essentials for those who are in ongoing crisis or who have come into crisis as a result of COVID 19.

Including linking to relevant District/Borough, as well as support to access relevant Government Schemes:

DWP Winter Fuel Payment: <https://www.gov.uk/winter-fuel-payment/>

Cold Weather Payment: <https://www.gov.uk/cold-weather-payment>

Warm Home Discount: <https://www.gov.uk/the-warm-home-discount-scheme>

Referrals and support via Districts/Boroughs for Herts Warmer Homes or YES Energy Solutions for example.

Including all Citizens Advice in the Districts and Boroughs who offer mid to long term crisis intervention support, providing advice, information and support on debt, benefits, employment enquiries, legal issues relating to financial matters, housing enquiries, consumer issues, family and relationship issues as well as fuel affordability, supply, billing, meter issues, scams and general support plus Energy Schemes via website: <https://www.citizensadvice.org.uk/consumer/energy/energy-supply/>

There is also the HERT (Hertfordshire Economic Recovery Team) partnership where HCC's Money Advice Unit (MAU) and Citizens Advice Hertfordshire (CAH) have come together to enhance the finance, welfare benefits and debt management advice already available in Hertfordshire to vulnerable residents who have been most affected by the COVID-19 crisis, to aid their financial recovery and embed future financial security and literacy, complementing the work done by financial inclusion workers in District and Borough Housing teams, especially regarding complex cases.

Wareside Primary School have been open for our Critical Worker parents and vulnerable children during the latest lockdown and continue to support our children and



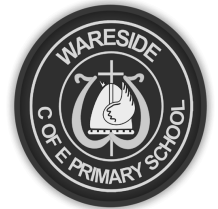
parents through Google Classroom. It is a strange time for all of us, but our children (supported by their parents and grandparents) are engaging brilliantly with the remote learning and the virtual get-togethers through Google Meet each morning and afternoon keep everyone connected. We are all looking forward to welcoming everyone back into the classroom when, hopefully, we can all enjoy the better weather.

Please look at the home learning photos linked to English and Art.

Ann Gaze

Interim Headteacher

Wareside C of E Primary School



Calling all Waresiders We would love having more contributions from people in & around the village, including editorial pieces, local news, matters of interest, events or suggestions as to how we might improve the parish magazine. Have you any new, interesting or historic pictures of Wareside you would like featured, or you think could a make a front cover for The Waresider

If you would like to have your say, contact:

Waresider@gmail.com

Villagers wanting to sell items privately can advertise in the Waresider for FREE!

Church Services

When I wrote my article about church services for the last Waresider, we were in lockdown but anticipating a change. It is fair to say that a lot of water has passed under the bridge since then, but we find ourselves in a similar situation now...

As I write, the Government has permitted public worship to take place in Covid-secure venues (like our church building), but all the benefice Parochial Church Councils (PCCs) and I decided for reasons of safety to hold our Sunday services only online. This decision was taken in light of the emergence of two new variants of the coronavirus and fast-rising case numbers in our area and is entirely in keeping with the spirit of the Government's message to stay at home. Our risk assessment and the protocols we have put in place mean that the building is still a Covid-secure venue, so it is open for funerals (with a maximum of 30 people present), but we felt it most appropriate to offer Sunday worship online. You can find a link to our services at www.waresidechurch.org.

We are currently awaiting news from the Government about its programme for lifting lockdown restrictions and will revisit our decision when the national picture is clearer. Updates will be posted on our website, via our e-newsletter and our social media pages. If, following our review, we choose to hold in-person services, they will be in the church building at 9:30am on:

- 14th and 28th March,
- 11th and 25th April, and
- 9th and 23rd May.



Edgar Landscapes

The specialists in garden design,
construction and maintenance

With over 25 years experience
we offer a complete garden service,
tailored to your needs and budget
Please call Mark for advice or a free quotation
office: 01920 460957 mobile: 07774 612183
email: mark.edgar8@btinternet.com
Hall House, Bakers End, Wareside, Herts SG127SH

Looking for a maths or science tutor?

I am a local student who has just finished my A-Levels and am available to give online tutoring in science and maths. Lessons are delivered in a friendly, flexible and approachable way, tutoring primary age up to GCSE level. Qualifications: A* in all science/maths subjects at GCSE, and predicted A*A*A in my A-Levels. References available on request. Please email

maxxrobinsonn@gmail.com.

**VOLUNTEERS NEEDED TO LISTEN TO CHILDREN READ IN
LOCAL PRIMARY SCHOOLS** www.schoolreaders.org

No qualifications are necessary, just a good command of spoken and written English. **Schoolreaders** is flexible and will match your availability to an appropriate, local school. **Please visit the website or call 01234 924111**



**INSTRUMENTAL
LESSONS**

*Piano, Singing and Flute
Lessons*

With Hannah

30 mins = £12.50
1 hour = £25.00

Contact Hannah on 07532117871
hannahtakats@hotmail.co.uk
Helham Green, Wareside

kevin@tlt-chimney-sweeping.co.uk
5 Mill Race,
Stanstead Abbots
Ware, Hertfordshire
SG12 8BZ
Tel: 07904 025301



Wareside Parish Council

New defibrillator

The new defibrillator is located at the entrance to the village hall and is active. It is being checked regularly by parish councillors.

- To access the unit in an emergency call 999. An emergency operator will provide you with the key code to unlock the defib.
- Despite concerns about mobile phone coverage in the village, dialling 999 will get you through to an emergency operator even if your mobile phone is displaying no reception bars.
- The emergency operator will know which defib is being used and will be in touch with the ambulance service.
- Make sure to tell the emergency operator where you are taking the defib to.
- Once activated, the unit will talk the user through steps to perform CPR and if necessary deliver a shock.
- When the ambulance service arrive they will probably take the defib away with them if it has been used. This is normal practice as they need to download the data regarding number of shocks delivered, time between shocks etc. The unit will be returned once this is done.

Once COVID meeting restrictions are lifted, a training session on CPR and the defibrillator will be organised by the parish council. Please let Councillor Mike Ryan mepryan@btinternet.com know if you would like to attend training.

Larkshill

As we have previously reported, the parcel of land behind the village hall car park known as Larkshill is now owned by the Parish Council. The site was originally an orchard and in order to assess the land and its long term future use we have undertaken to clear it of scrub, deadwood and brambles. This has been done in the dormant season so as not to disturb wildlife ahead of the nesting season. Much of the initial clearance work has now been done and over the next couple of weeks the team will be in the final stages of cutting back. It is hoped that as soon as the ground has settled and the area is safe, the space will be opened for Wareside residents to come and have a look for themselves.

Brown bins

Our brown bins have, up until now, been collected by the District Council free of charge. We understand that the District Council has now decided to charge for this service. The annual cost for one bin will be £49. To book and pay for a collection you must opt in to the service by visiting the District Council's website. If you book by 22 March and pay by direct debit, the annual charge is reduced to £45. You will be able to pay for additional bins should you wish to do so. The costs for this are set out on the website. If you want to continue to use the service but don't think that you will be able to make full use of it, you might want to consider sharing a bin and the cost of collection with a neighbour.

Wareside Parish Council

This continues our usual pattern and, as normal, Waresiders are encouraged to join with the congregation at Widford Church at 9:30am on the 1st and 3rd Sundays of each month, even as Widford's congregation is encouraged to join worship in Wareside on the 2nd and 4th Sundays. Just bring a facemask and turn up in good time to get comfortable before the services begin.

In addition to these services, our midweek "home group" meetings will continue online via Zoom. And if you cannot access the internet, you can use our dial-a-sermon phonenumber at any time to catch up with the teaching (01279 967111).

Finally, if you have any requests for prayer, please do not hesitate to let me know. There is a virtual prayer box on our website, or you can always call or email me. I and others would be very happy to pray for you and your loved ones.

Mark Dunstan, 01920 877276



Wareside Childminding

Learn. Share. Laugh. Grow.

**Ofsted
Registered
Childminder**

Monday to Friday from 7:30am to 6pm.

- From Term time to full time contracts available.
- Safe and caring home from home child care.

Email waresidechildminding@gmail.com

Calling all Waresiders Appeal for your support for the church

In a "normal" year, the Holy Trinity Church in Wareside has to go to great efforts to cover its running expenses.

The pandemic has made this even more difficult, with little opportunity for fund raising events, let alone collections during services.

With this in mind, we are asking villagers if they would consider making either a one-off donation, or better still, set up a standing order for a regular sum. £5 or £10 a month would make a tremendous difference to the finances of the church and enable the church to continue at the heart of our community for years to come.

If you think you could make any sort of donation, I detail below the bank account for the church.

Account name : Wareside PCC

Sort code : 30-84-85

Account number : 23672560

If you are a UK taxpayer and are eligible to Gift Aid your donation, you can complete a form which will increase your gift by 25p for every £1 given at no extra cost to you or us. You can download it from www.waresidechurch.org/ efficient-giving or if you email me I can send you a copy for you to complete. Thank you.

Sarah Hart, Treasurer
waresidetreasurer@hwwchurch.org.uk

POWELL FUNERAL SERVICE

Watton Road Ware

01920 463260

79 Burford Street Hoddesdon

01992 470153

83 Railway Street Hertford

01992 509611

Stones have been used as building material within walls in Much Hadham and Wendens Ambo, in Great Hallingbury's church tower and in St Helen's Chapel at Wicken Bonhunt.

One in Standon is proudly displayed, whilst a large puddingstone in Newport seems to have been unceremoniously abandoned beside the approach road to



the station. Others stand in Tilty churchyard, by the pump at Ugley Green, in Saffron Walden Museum's grounds, by the Shell House in Hatfield Forest and beside the Yew Tree pub in Manuden.

No doubt there are many more – I would be pleased to hear of any that I have missed – please email me at

hundredparishes@btinternet.com, if possible with a photo.

Will we find more in Hertfordshire or Essex?

Ken McDonald, Secretary.

Photos

Arkesden, Brent Pelham

Newport, Standon

Ugley Green, Wendens Ambo



THE HUNDRED PARISHES SOCIETY

www.hundredparishes.org.uk

Our area has a good number of so-called "Hertfordshire puddingstones". I am not convinced that Hertfordshire has any real justification for claiming the puddingstone because examples can be found on both sides of the Essex / Hertfordshire county boundary. I recently acquired a copy of "Puddingstone Walks in Essex", a neat little book that describes walking routes which in total pass more than twenty puddingstones or groups of puddingstones in the Essex part of the Hundred Parishes.

A puddingstone is a conglomerate of many small, rounded and colourful pebbles that appear to have been cemented together. Geologists explain that they were formed around 50 million years ago and were deposited in this area by a retreating glacier, possibly only 10,000 years ago at the end of the last Ice Age.

Some puddingstones lay where they were deposited, whilst others have been moved to more convenient locations and sometimes put to good use. Brent Pelham and Arkesden have incorporated them into their war memorials. Others are visible in Arkesden in the stream of Wicken Water beside the bridge.



Ace Pest Control

Prompt & Professional Control of

- * WASPS & BEES *
- ANTS, FLIES, FLEAS - ALL INSECTS
- RATS, MICE, MOLES
- RABBITS, SQUIRRELS, ETC.

ROYAL SOCIETY OF HEALTH MEMBER npta NATIONAL PEST TECHNICIANS ASSOCIATION

01920 465092

Easneye Cottage, Holly Cross Rd., Ware

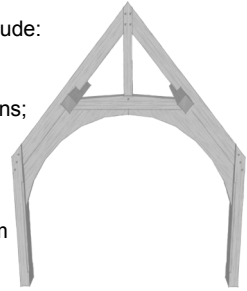
ARCH Building Consultancy Ltd.

Historic Building Consultancy Chartered Building Surveyors

Specialising in Listed and historic buildings.

Professional services include:

- Architectural design for alterations and extensions;
- Advice on repairs and conservation;
- Project consultation from inception to completion.



www.archbuildingconsultancy.co.uk
info@archbuildingconsultancy.co.uk

Regulated By RICS

01920 486050

ALTERATIONS REPAIRS CONSERVATION HISTORIC BUILDINGS

Pickup or Home delivery Beer in Box

3l approx. 5pts £13.50
5l approx. 9pts £22.50
10l approx. 18pts £36
20l approx. 36pts £60

500ml bottles

Six £16 Twelve £30
In mixes case or single style

HADHAM

BREWERY Est. 2015

Search online, call 01279 771916 or Email info@hadhambrewery.co.uk

Registered Charity
No. 302487



Wareside Village Hall Booking Charges

CATEGORY	TIME	FEE
CHILDREN'S PARTIES (under 12 years of age) Up to 3 hours, plus 1/2 hour before and after allowed free for setting up. Any extra time at hourly rate. Includes use of kitchen.	9.00am – 5.00pm	£25
Any Other Use	£10/hour	

For more information call Mrs Judy King 01920 467223

A note from the Chair of Wareside Village Hall

As most people probably know, Doug Cook is a member of the Village Hall Committee. On behalf of the other Committee Members, I would like to say a big thank you to Doug for the time and effort he has put in to carry out much needed maintenance to the hall. It would have cost a great deal of money if we had paid someone to do the work. Your efforts are much appreciated Doug.

We would also like to give a shout out to Waresiders Mark, Linda, Jake & Albie, of MS Decorating, for the wonderful job they have done with the painting and repairs to the village hall.

INTERIOR & EXTERIOR

MS
DECORATING

We would also like to thank Andrew Moore, a long standing member of Wareside Entertainers for arranging the re-felting of the hall's roof.

t. 01920 484743 m. 07973 924603

Wareside C of E Primary School's Nursery

Our Nursery is open each school day from 8.45am until 3.00pm. We offer a high quality, nurturing environment including 30 hours of nursery provision for 3 and 4 year olds.



Childcare Costs

All 3 to 4 year olds can receive 15 hours of free early education/childcare every morning.

An additional free 15 hours for the afternoon sessions, totalling 30 hours per week, is available for eligible families.

Please find out more here: www.gov.uk/30-hours-free-childcare

If your family is not eligible, the afternoon sessions cost £12.00 a day.



Please visit our website and view a new video introduction of our school.

Part of a GOOD school(Ofsted 2017)

Idyllic village just 5 minutes from Ware
"Nursery and Reception children in the early years settle into their routines quickly and thoroughly enjoy their indoor and outdoor learning activities" (Ofsted 2017)

PAWS IN GOOD HANDS

Dog Walking +home visits for smaller pets **Cat Sitting**
And all fully insured

Dog walking 45mins-£10 1hour-£12

Cat & Puppy sitting £10 per visit

Need your pet taking to the Vet or groomer

Tel-Jodie 01920 463 723 / 07951 945 088

Email jodiejacob1@btinternet.com

From an ex-RSPCA Veterinary Nurse 20+ years experience & references available on request
your best friend couldn't be in better hands

A number of Wareside residents, concerned with the speed of drivers through the village, have formed a "20's Plenty for Wareside" group. The idea of 20mph speed limits "where people are" is gaining popularity across the country and a number of towns and villages in Hertfordshire are forming their own groups to show solidarity with their neighbours. 70% of residents consistently support 20mph according to the National Travel Attitudes Survey (data available annually from 2006-2018).

Wareside is a rural residential community, where the needs of residents come first. The "20s Plenty for Wareside" group believe in a 20mph limit for our narrow lanes. 20mph limits emphasise a quality of life.

Advantages for Wareside:

SAFER ROADS FOR ALL, PARTICULARLY CHILDREN AND THE ELDERLY

There is less risk of serious injury at lower speeds, especially for vulnerable road users; less intimidation from motor vehicles for all road users and especially those walking, cycling or horse riding

PROMOTING ACTIVE HEALTH FOR RESIDENTS

Slowing traffic reinforces healthy lifestyles by encouraging walking, cycling and active travel, particularly around the village where people are on foot, for example near our school, allotments, church and the pubs

ENVIRONMENTAL IMPROVEMENTS

Vehicle emissions and noise are reduced due to lower speeds and traffic volumes

BETTER COMMUNITY LIFE AND A POSITIVE IMAGE OF WARESIDE

20mph enables lifestyle changes, renewed community life, sociability and the positive atmosphere we all want where we live

The group are aware of anecdotal evidence of drivers travelling through the village too fast, and we are looking to hear from other residents who would like to share experiences, so that we can build a case to put forward to our council authorities.

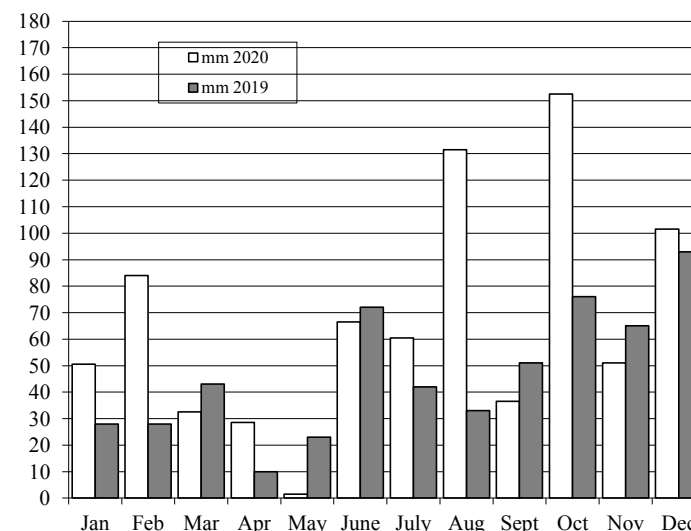
If you are interested in supporting the group, or just finding out more about the campaign and benefits of 20mph to your residential area, you can join us on Facebook at www.facebook.com/groups/20splentyforwareside or email wareside@20splentyforus.org.uk.

Please keep an eye out for posters and stickers encouraging drivers to adjust their speed. We are encouraging neighbouring villages to do the same to get our message out there. If you would like to display some too, contact us using the details above.

20's Plenty for Wareside



RAINFALL (at The Red Lion) WARESIDE
2019 and 2020



Total Year	mm	ins
2011	491	19
2012	831	33
2013	613	24
2014	809	32
2015	584	23
2016	494	19
2017	630	25
2018	583	23
2019	564	22
2020	797	31
20 year average to 2020 = 26 ins		
10 year average to 2020 = 25 ins		

Vehicle Repair Recovery
Part of the 20th Anniversary Line Group

-  **All repair work undertaken**
-  **24hr Roadside Recovery**
-  **Aircon Servicing**
-  **Body shop**
-  **And more**

TEL: 01920 330610

CARER AVAILABLE

Are you caring for a relative at home?

Do you sometimes need a short break,

perhaps to go shopping or

out with a friend for a coffee?

I am a carer with 25 years experience,

NVQ qualified and DBS checked.

I live in Wareside and can offer short breaks of up to 3hours.

If I can help please call or email me to discuss.

email Davidgoodman068@gmail.com

or call David Goodman 07531 305712



WARESIDE
ALLOTMENT
ASSOCIATION

Since the last issue of Waresider my trips to the allotment have been few and far between. With the seemingly endless winter rain the ground has been too wet and sticky to walk on let alone dig. On the bright side, the rain has just about filled all the communal water storage containers; and many plot holders may find their water butts full to overflowing - quick get another bucket.

With all the stay at home / lockdown time I've spent some of it checking allotment and gardening videos on You Tube. The DIYer plot holders among you may find The Gardening Channel with James Prigioni of interest. It has videos of a number of DIY projects including how to build a hinged hoop frame / poly tunnel for a raised bed.

Another stay at home activity was perusing the seed catalogue and getting orders to Marian. Thanks Marian for all the work you put into collating everyone's orders. I think I may have been rather optimistic this year, with the variety of seeds I ordered; but if I'm lucky you may see tumbling courgettes hanging from trellis later in the year. Must make sure I pick them before they are the size of marrows and they pull the trellis down.

With spring just around the corner it's a good time to ensure tools are cleaned and ready for action. On the subject of tools, I have several old petrol lawn mowers cluttering up the garden / garage; they are suitable for spares or repair so if anyone is interested contact me.

It may be a few more weeks until planting gets under way but if you are like me there are still plenty of jobs to do. I hope to get back to weeding and preparing the ground for planting later this week, weather permitting.

Hope to see a few hardy allotmenters on their plots soon.

Keep safe and stay well,

Mike



Saving you precious time

A+ Bookkeeping

For all your bookkeeping needs

Qualified with over 15 years experience

VAT,SAGE,CIS,
General
Bookkeeping
And more

Mobil-07388 158943

Email -

aplus_bookkeeping@outlook.com